

# **REQUEST TO EXIT PUSH BAR**

## **MODEL REB-1**



### ***OUTSTANDING FEATURES***

- LOW OPERATING FORCE, MINIMUM BAR TRAVEL
- FOUR S.P.D.T. SWITCHES FOR POSITIVE REDUNDANT OPERATION
- LOW PROFILE DESIGN
- LENGTH 34-1/2", WIDTH 2-1/2", HEIGHT 2"
- HEAVY DUTY CLEAR ANODIZED SATIN ALUMINUM CONSTRUCTION
- AVAILABLE IN DURONIC FINISH
- EASILY INSTALLED ON ALL TYPES OF DOORS
- FIELD REVERSIBLE
- LIFETIME WARRANTY

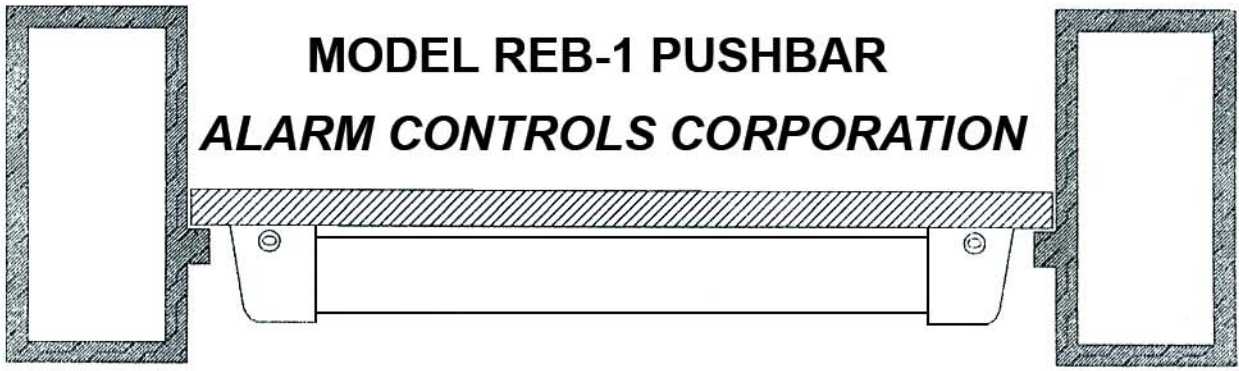


**ALARM CONTROLS CORPORATION**  
19 BRANDYWINE DRIVE DEER PARK, NY 11729

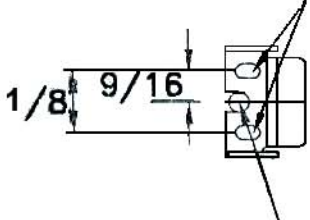
1 631 586-4220 1 800 645-5538  
WWW.ALARMCONTROLS.COM EMAIL INFO@ALARMCONTROLS.COM

# MODEL REB-1 PUSHBAR

## ALARM CONTROLS CORPORATION

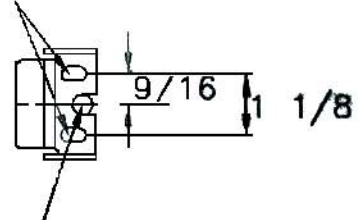


DRILL 3/8" MOUNTING HOLE



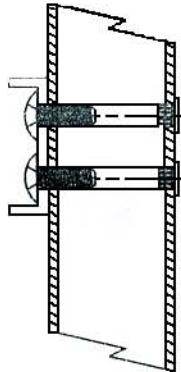
HORIZONTAL REFERENCE LINE  
40-42" FROM FINISHED FLOOR

DRILL 3/8" MOUNTING HOLE

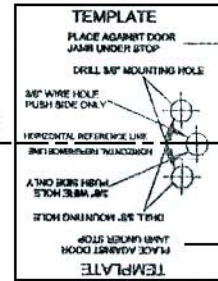


DRILL 3/8" WIRE HOLE PUSH SIDE ONLY

DRILL 3/8" WIRE HOLE PUSH SIDE ONLY



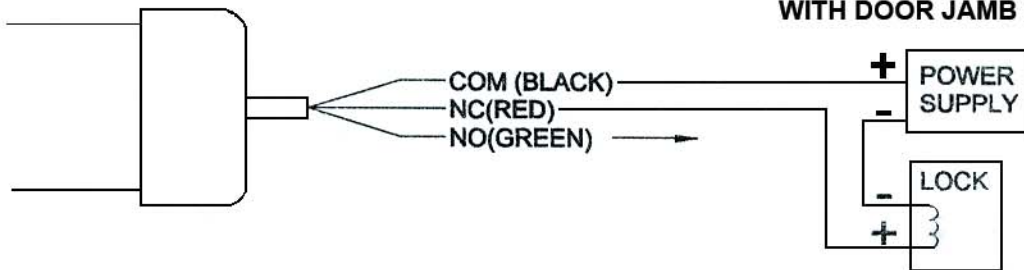
HORIZONTAL REFERENCE LINE



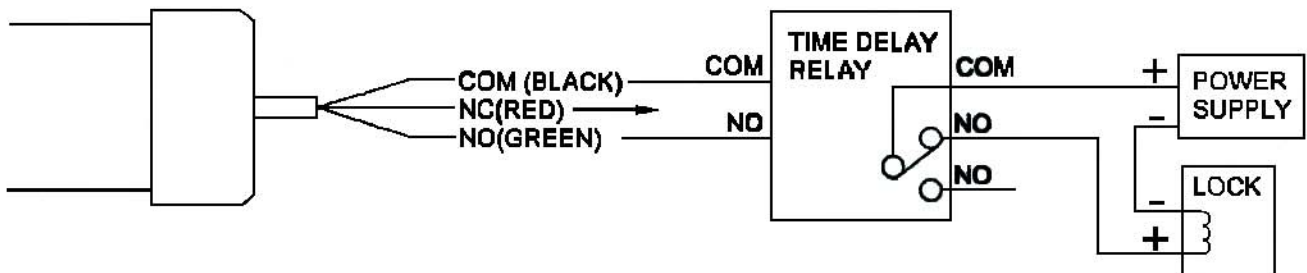
DOOR JAMB

PLACE TEMPLATE ON FACE OF DOOR AGAINST DOOR JAMB CENTERED WITH HORIZONTAL REFERENCE LINE.

NOTE: IF DOOR STOP IS IN THE WAY SLIDE TEMPLATE BETWEEN STOP AND DOOR FACE UNTIL CONTACT WITH DOOR JAMB IS MADE.



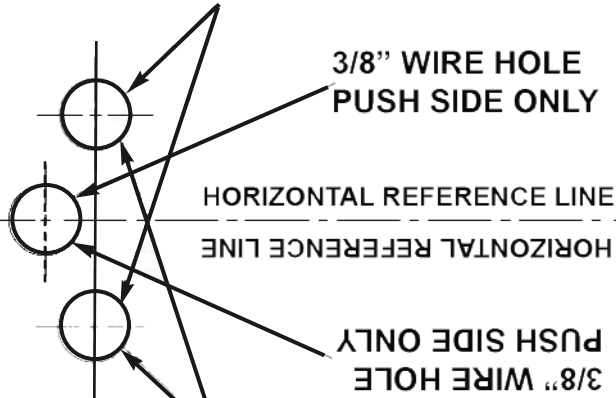
5 AMP 125/250 VAC



# TEMPLATE

PLACE AGAINST DOOR  
JAMB UNDER STOP

DRILL 3/8" MOUNTING HOLE



3/8" WIRE HOLE  
PUSH SIDE ONLY

HORIZONTAL REFERENCE LINE

HORIZONTAL REFERENCE LINE

3/8" WIRE HOLE  
PUSH SIDE ONLY

DRILL 3/8" MOUNTING HOLE

PLACE AGAINST DOOR  
JAMB UNDER STOP

# TEMPLATE